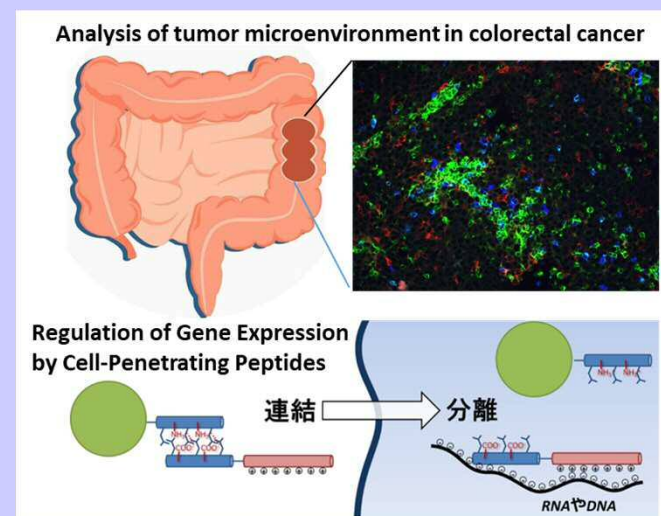


Development of Novel Immunotherapy by Modulating the Immune Microenvironment in Colorectal Cancer

(Prof. Junichiro KAWAMURA, kawamuraj@med.kindai.ac.jp)

Research Area

1. Immunohistochemical analysis of Colorectal Cancer
2. Immunogenomic Analysis of Colorectal Cancer
3. Analysis of the Immune Microenvironment Related to Treatment Efficacy and Prognosis
4. Development of a Novel Immune Modulation using Cell-Penetrating Peptides



Recent Activities

- Makutani Y, et al. Contribution of MMP14-expressing cancer-associated fibroblasts in the tumor immune microenvironment to progression of colorectal cancer. *Front Oncol.* 2022 Aug 16;12:956270.
- Sugawara T, et al. Immune subtypes and neoantigen-related immune evasion in advanced colorectal cancer. *iScience.* 2022 Jan 6;25(2):103740.
- Kitamatsu M, et al. Complementary Leucine Zippering System for Effective Intracellular Delivery of Proteins by Cell-Penetrating Peptides. *Bioorg. Med. Chem.* 2021, 33(1), 116036-116041.