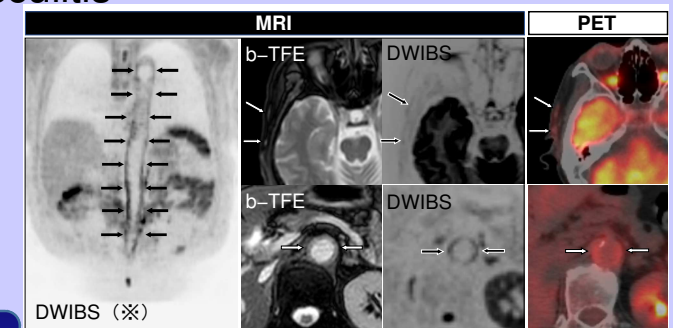


Correlation between FDG-PET/CT and DWIBS Methods for Diagnosis and Relapse in Large Vasculitis (Dr. Yuji NOZAKI yuji0516@med.kindai.ac.jp)

Research Area

1. Imaging Evaluation in Large Vasculitis
2. Comparative study of the usefulness of PET-CT and MRI (DWIBS)
3. Establishment of the DWIBS technique as a diagnostic image in large vasculitis



Recent Activities

- ✓ Efficacy of iguratimod vs. salazosulfapyridine as the first-line csDMARD for rheumatoid arthritis.
Modern rheumatology 30(2) 249 - 258 2020年3月
- ✓ Inhibition of the IL-18 Receptor Signaling Pathway Ameliorates Disease in a Murine Model of Rheumatoid Arthritis. Cells 9(1), 2019