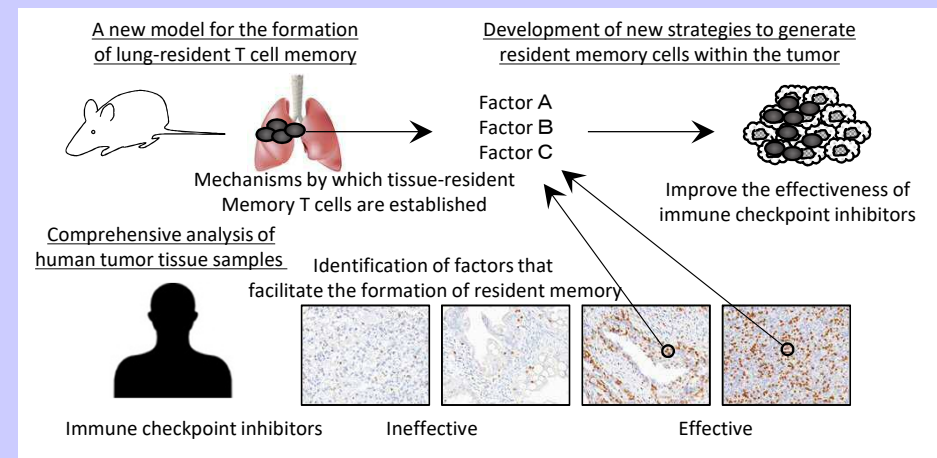


Development of new therapeutic strategies to improve the effectiveness of immune checkpoint inhibitors

(Dr. Noriomi Matsumura, noriomi@med.kindai.ac.jp)

Research Area

1. Understanding the factors that regulate the generation of tissue-resident memory T cells.
2. Identification of factors that facilitate the establishment of resident memory T cells within the tumor
3. Development of new strategies to generate tumor-resident memory T cells.



Recent Activities

- Niches for long-term maintenance of tissue-resident memory T cells . Takamura. Front. Immunol. 9: 1224, 2018
- Specific niches for lung-resident memory CD8⁺ T cells at the site of tissue regeneration enable CD69-independent maintenance. Takamura et al. J. Exp. Med. 213(13): 3057-73, 2016