

EXTRA

The Kindai Times



The rooster is our paper's symbol.

STUDENT WRITTEN AND PUBLISHED

Welcome to ACADEMIC THEATER



Front view of "Academic Theater"

1F

Building 5

NOAH33 (in BIBLIOTHEATER)

Building 4

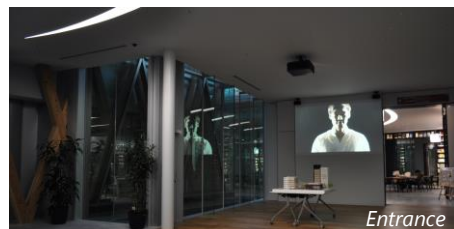
ALL DAY COFFEE

NOAH33 in BIBLIOTHEATER

You can find academic books easily, because they are from each faculty of Kindai University.



Reception

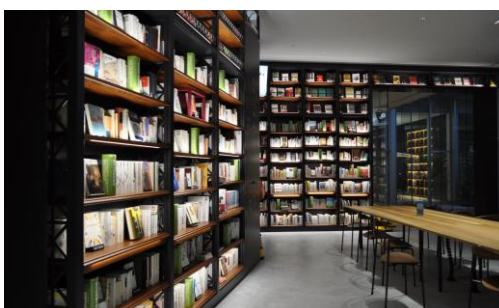


Entrance

OPEN 08:45 ~ 22:00

(Sunday and national holiday closed)

Bookshelves

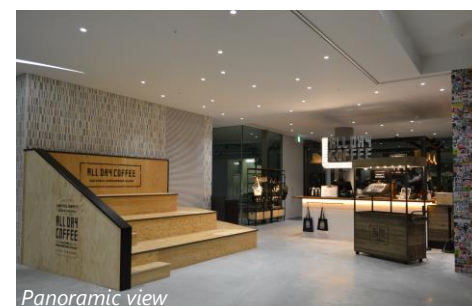


ALL DAY COFFEE

It is known for its "third wave coffee." Recommended is the "All day coffee," named after the café.



Counter



Panoramic view

OPEN 08:00 ~ 20:00

2F

Building 5 DONDEN (in BIBLIOTHEATER)

Building 4 CNN Café

Building 2

CAREER CENTER

Building 1

Language Education Center

DONDEN in BIBLIOTHEATER

Books are divided by genre.

There are about 40000, ranging from, comics, paperbacks, and library resources.



Bookshelves

**OPEN 08:45 ~ 22:00**

(Sunday and national holiday closed)

**CAREER CENTER**

All Kindai students can get support for employment and career counseling.



Qualification desks

Help desks

Weekdays 08:45 ~ 18:30

Saturdays 08:45 ~ 12:30

Qualification desks

Weekdays 10:00 ~ 18:00

Saturdays 08:45 ~ 12:30

Language Education Center

You can get support to develop your language skills.

You choose from seven languages and take courses for free.



International Studies Area

OPEN

Weekdays 09:00 ~ 18:15

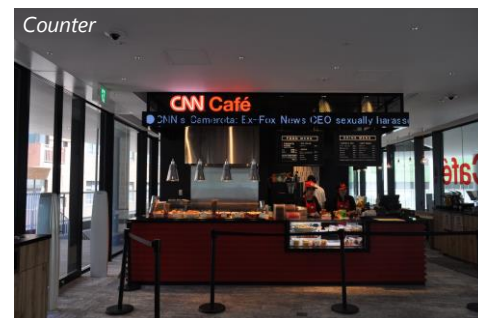
Saturdays 09:00 ~ 17:00



International Lounge

CNN Café

You can watch world news there and read English magazines. Also, they have excellent hotdogs.



Counter

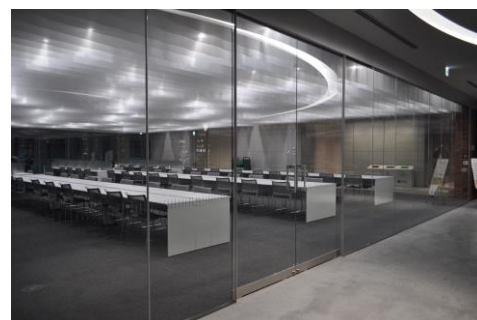


Panoramic view

OPEN 10:00 ~ 17:00

1F 2F

Building 3

Study hall**Study hall**

It is open 24 hours per day 365 days per year and has areas only for women. It is great place to study at exam time!

OPEN 24 hours**The Kindai Times****Published by:**
Printed by:
Office:The English Press Society
Taiyosha Co. Ltd
Kindai University,
3-4-1 Kowakae,
Higashiosaka City,
Osaka, 577-8502 Japan
+81 (06) 6722-7038**Telephone:****Publisher:****Chief Editor:****Chief Translator:****Editor:****Supervisors:**Y. Nakai
S. Yanase, R. Kawabata
M. Kadowaki
The Kindai Times staff
W. Figoni, A. Kitzman,
N. Yoshimoto, E. Shimo